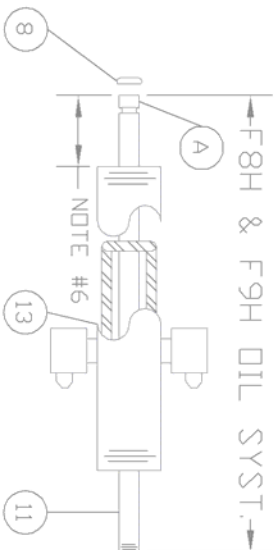
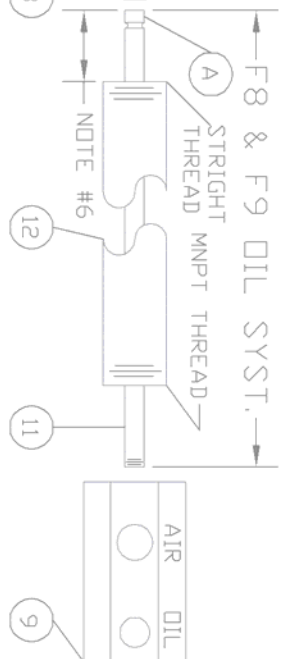
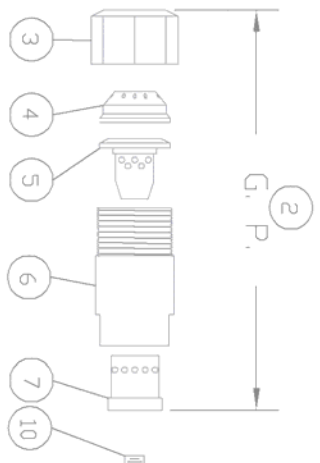
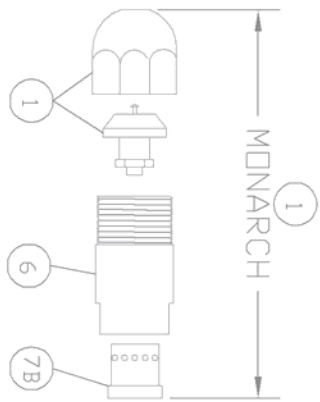
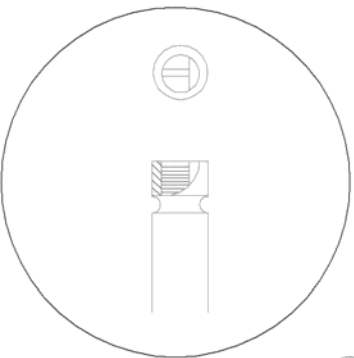


REPLACEMENT PARTS AID, F8,F8H,F9 & F9H DIL SYSTEMS



GP NOZZLE ASMS.	
ITEM	DESCRIPTION
1	COMPLETE NOZZLE ASM. 010521-XXXX
2	COMPLETE NOZZLE ASM. 010525-XXXX
3	COMPLETE NOZZLE ASM. 010645-XXXX
4	COMPLETE NOZZLE ASM. 010647-XXXX
FOLLOWING ITEMS INCLUDED IN THE ABOVE ASMS.	
3	NUT - RETAINING 010503-0000
4	TIP - NOZZLE 010522-XXXX
	010526-XXXX
	010646-XXXX
	010648-XXXX
5	MIXER 010523-0010
6	NOZZLE ADAPTER 010475-0000
7	NOZZLE DISTRIBUTOR 010524-2000



- NOTE:
1. NOZZLE GP P/N'S WITH DASH-XXXX, GIVES G. P. H. RATING FOR COMPLETE P/N.
 2. FUEL & AIR SUPPLY GP P/N'S WITH DASH-XXXX, HOUSING & COMBUSTION HEAD MUST BE KNOWN TO DETERMINE TUBE LENGTH.
 3. WHEN ORDERING PARTS GIVE U.L.# AND/OR SHOP ORDER (SQ#) NO.
 4. ITEM 10 PLUG USED FOR LIGHT OIL ONLY.
 5. O RING MUST BE LUBED BEFORE INSTALLING.
 6. FUEL TUBE (#11) MUST EXTEND OUT OF AIR TUBE #12 OR 13 BY .625 + OR - 1/16".

ITEM	DESCRIPTION	GP P/N (1)	NOZ. ANGLE
1	NOZZLE TIP ASM. C169WA SERIES	231101-4XXXX	80 DEG.
		231101-5XXXX	90 DEG.
			100 DEG.
6	NOZZLE ADAPTER	010475-0000	ALL
7B	NOZZLE DISTRIBUTOR	010477-2000	ALL

PARTS COMMD TO BOTH		GP & MONARCH NOZZLE
ITEM	DESCRIPTION	GP P/N (2)
8	O RING SEAL 2-013	220018-0020
9	REAR BLOCK	010474-0000
10	PLUG (#2 OIL ONLY)	010538-0000
11	INNER FUEL TUBE 1/4	070646-XXXX
12	OUTER AIR TUBE 1"	070645-XXXX
13	AIR SPLYHEATED LOOP	071010-XXXX

360149-1000

REV. A